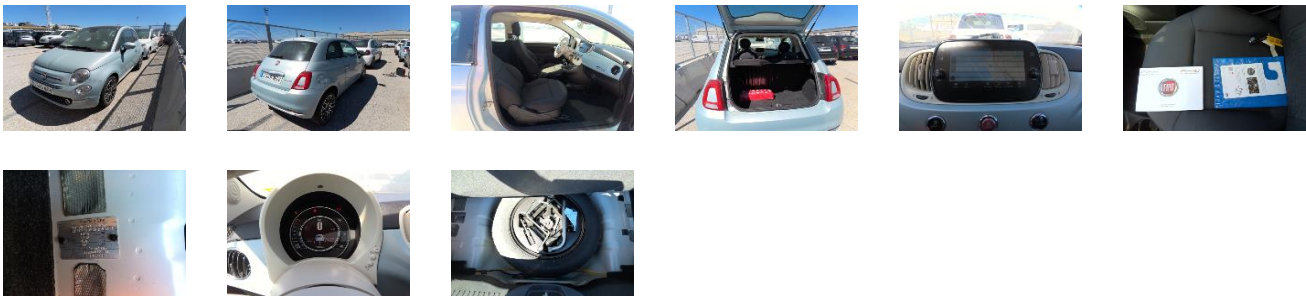


Détails véhicule

| | | | | | |
|-------------|--|------------------------|------------|--------------------------|-----------|
| VIN | ZFACF1BJ5 PJH55411 | Date d'immatriculation | 16/05/2023 | Couleur | INCONNUE |
| Marque | FIAT | Immatriculation | GY-358-PD | Odometre | 19 468 km |
| Modèle | 500 Hybrid 1.0 BSG 70ch Sur stock uniquement | Etat du véhicule | Conforme | | |
| Pré-dommage | | Montant pré-dommage | - | Commentaires pré-dommage | |

Détails d'évaluation

| | | | |
|------|--------------------------|--|--|
| Parc | FILIPPI Marseille Pinède | | |
|------|--------------------------|--|--|







Éléments amovibles

| | |
|-----------------|---|
| Roue de secours | ✓ |
| Outils de bord | ✓ |
| Plage arrière | ✓ |

Documents techniques




| | |
|----------------------|---|
| Porte documents | ✓ |
| Manuel d'utilisation | ✓ |
| Clef Plip | ✓ |
| Carnets de bord | ✗ |
| Double clefs | ✗ |
| Forfait carburant | ✗ |

Pneumatiques


| | | | | |
|---------------------------------|---|---------------------------------|---|---------------------------------|
| Goodyear 195/45/16 V Eté 7.0 mm |  | Goodyear 195/45/16 V Eté 5.0 mm |  | Uniroyal 135/80/14 M Eté 7.0 mm |
| Goodyear 195/45/16 V Eté 6.0 mm |  | Goodyear 195/45/16 V Eté 5.0 mm |  | |

Dommages extérieurs

| | | | | | | | |
|---|---|--------------|--------------------|---|--|--------------|--------------------|
| 4 |  | Élément | Pneu | 5 |  | Élément | Jante spéciale 16' |
| | | Position | Avant Gauche | | | Position | Avant Gauche |
| 6 |  | Dommages | Coupé | 7 |  | Dommages | Rayure |
| | | Commentaires | - | | | Commentaires | - |
| 6 |  | Élément | Jante spéciale 16' | 7 |  | Élément | Jante spéciale 16' |
| | | Position | Arrière Gauche | | | Position | Arrière Droit |
| 6 |  | Dommages | Rayure | 7 |  | Dommages | Rayure |
| | | Commentaires | - | | | Commentaires | - |

| | | | | | | | |
|----|---|--------------|--------------------|---|--|--------------|-------------|
| 8 |  | Elément | Jante spéciale 16" | 9 |  | Elément | Aile |
| | | Position | Avant Droit | | | Position | Avant Droit |
| | | Dommages | Rayure | | | Dommages | Enfoncement |
| | | Commentaires | - | | | Commentaires | - |
| 10 |  | Elément | Aile | | | | |
| | | Position | Arrière Gauche | | | | |
| | | Dommages | Enfoncement | | | | |
| | | Commentaires | - | | | | |

Autres dommages

| | | | |
|---|---|--------------|-------------------|
| 3 |  | Elément | Forfait carburant |
| | | Position | - |
| | | Dommages | Manquant |
| | | Commentaires | - |

Commentaires

PneuARG Goodyear 195/45/16 V 6.0 Mm
 PneuAVG Goodyear 195/45/16 V 7.0 Mm
 PneuAVD Goodyear 195/45/16 V 5.2 Mm
 PneuAR Uniroyal 135/80/14 M 7.0 Mm
 PneuARD Goodyear 195/45/16 V 5.8 Mm